

Index

Ch1 : Specifications

Ch2 : Basic Instructions

Ch3 : Step Ladder Instructions

Ch4 : Advanced Devices

Ch5 : Applied Instructions

Ch6 : Special Auxiliary Relay & Data Register

Appendix A RS422 Interface Pin Arrangement

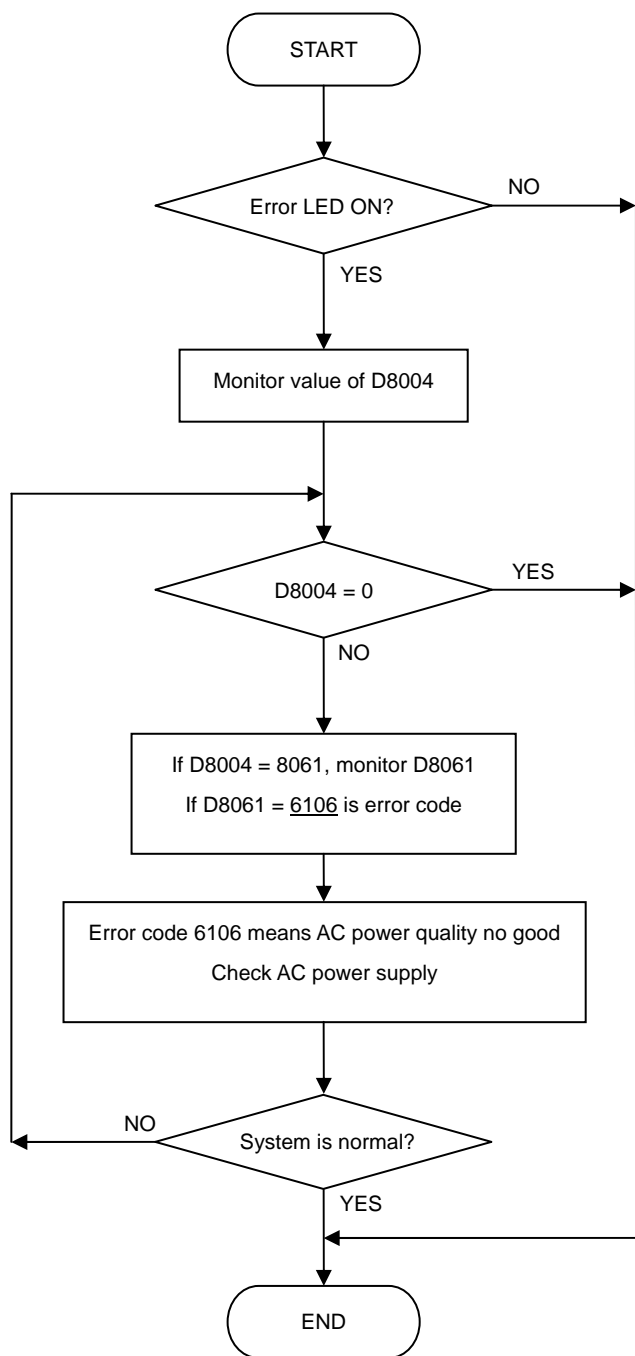
Appendix B Troubleshooting & Error Code List

◆ Trouble shooting :

While ERR LED is lit:

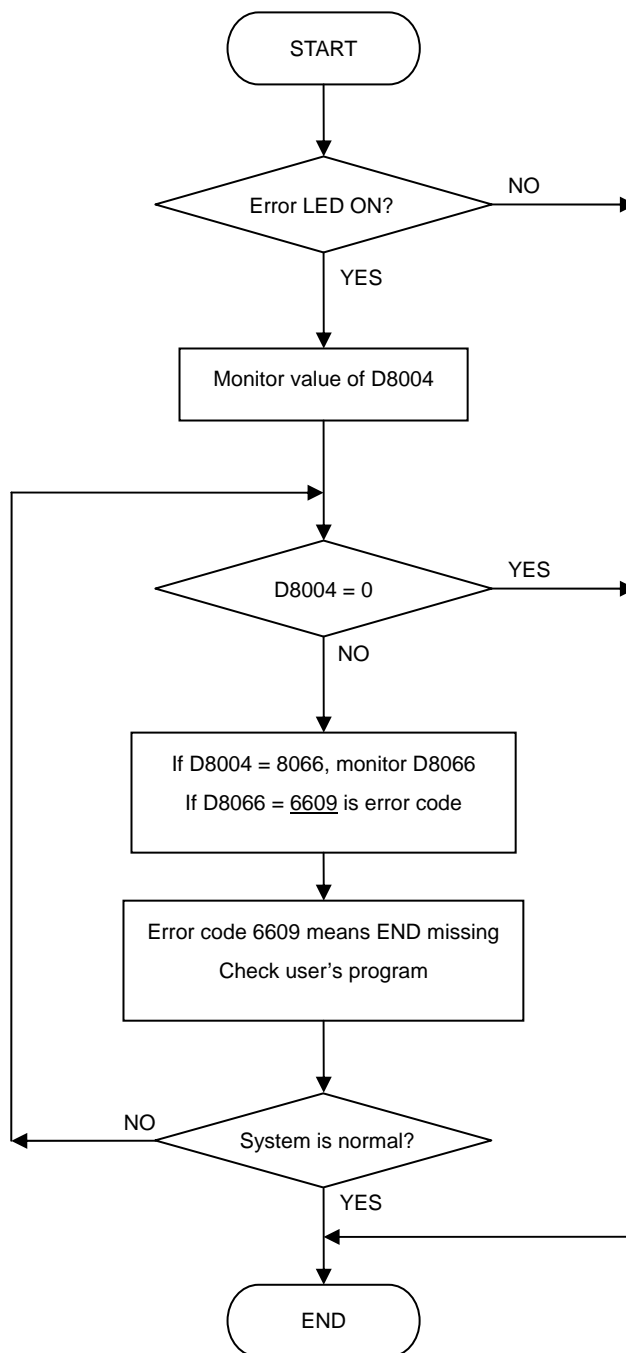
Example 1:

- a. To monitor register of error code D8004.
 - b. If D8004=8061, then monitor value of D8061.
 - c. If D8061=6106, error code 6106 means AC power quality no good.
 - d. To improve quality of AC power supply.
- * Please refer to following pages to know more error codes.



Example 2:

- a. To monitor register of error code D8004.
 - b. If D8004=8066, then monitor value of D8066.
 - c. If D8066=6609, error code 6609 means there is no END command.
 - d. To check user's program.
- * Please refer to following pages to know more error codes.



Error code	Associated Meaning
0000	No error
6001	
6002	
6003	
6004	
6005	
6006	
6007	
6008	
6009	

Error code	Associated Meaning
0000	No error
6101	SRAM hardware error
6102	
6103	Dummy Error
6104	EEPROM hardware error
6105	Led frame error
6106	AC power quality no good
6107	24Vdc power failure
6108	Monitor program overflow
6109	User program overflow

Error code	Associated Meaning
6110	
6111	Pulse output error
6112	Pulse function data set error
6113	FpgaVersionCode error
6114	
6115	
6116	
6117	
6118	
6119	

Error code	Associated Meaning
0000	No error
6201	
6202	
6203	Com2 checksum error
6204	Com2 command string too long
6205	
6206	
6207	
6208	
6209	

Error code	Associated Meaning
0000	No error
6301	
6302	
6303	
6304	
6305	
6306	
6307	
6308	
6309	Watchdog overflow

Error code	Associated Meaning
0000	No error
6401	
6402	
6403	
6404	
6405	
6406	
6407	
6408	
6409	

Error code	Associated Meaning
0000	No error
6501	
6502	
6503	
6504	
6505	
6506	System program error
6507	System watchdog error
6508	
6509	No this instruction

Error code	Associated Meaning
0000	No error
6601	LD & LDI used continuously more than 8
6602	LD, LDI & ANL, ORL incorrect
6603	MPS used continuously more than 11 times
6604	MPP & MPS incorrect
6605	STL & RET error
6606	No SRET or IRET instruction
6607	FOR & NEXT error
6608	MC & MCR incorrect
6609	END missing

Error code	Associated Meaning
0000	No error
6701	
6702	
6703	
6704	
6705	Applied instruction error (program keep run)
6706	Applied instruction error (program stop)
6707	
6708	
6709	

Error code	Associated Meaning
6760	
6761	
6762	
6763	
6764	Pulse output pin duplicate
6765	Pulse function data set error
6766	
6767	
6768	
6769	