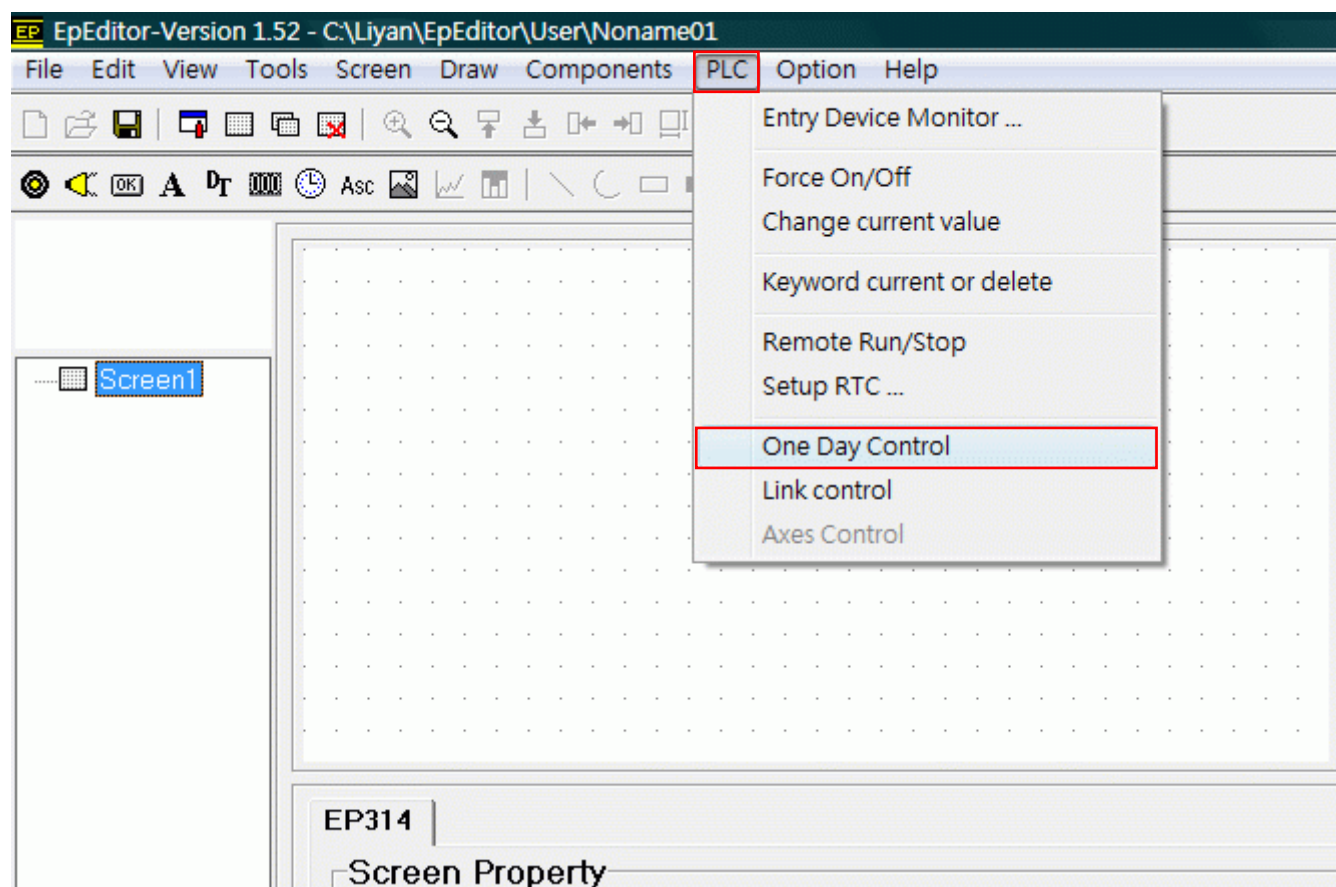


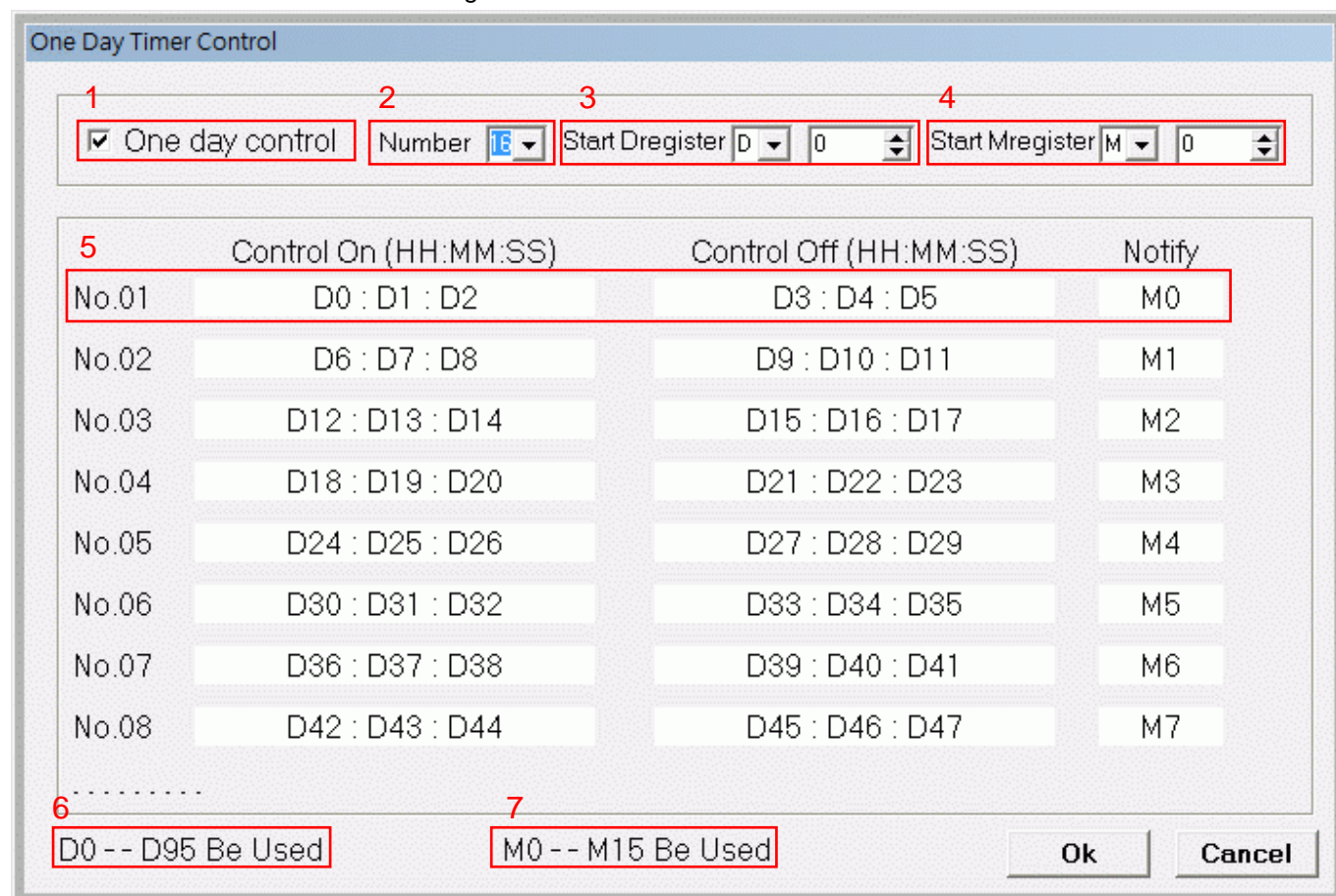
## EPeditor : One Day Control (HMI type : EP314)

◆Operation

Select PLC → One Day Control



The frame will be showed after selecting



- 1: Enable / Disable. It means that enable One Day Control function if selected.
- 2: To set number of using sets. Minimum is 1 set and maximum are 16 sets.
- 3: To set Start D register. Every set is occupied 6 registers.
- 4: To set Start M register (auxiliary relay). Every set is occupied 1 M register (auxiliary relay).
- 5: This column shows occupied D and M for first set of One Day Control.
- 6: This shows all D registers which are occupied by One Day Control.
- 7: This shows all M registers (auxiliary relays) which are occupied by One Day Control.

◆Description of action

For Example : 1st set

1. D0:D1:D2(HH:MM:SS) is starting time and D3:D4:D5(HH:MM:SS) is ending time. M0 is relay for starting.
2. When RTC's time (HH/MM/SS only) is come to starting time (D0:D1:D2), M0 is ON immediately and keep the status until time is come to ending time(D3:D4:D5). When time is come to ending time, M0 is OFF immediately.
3. D0 and D3 are data for HOUR, so value should be 0 to 23.
4. D1, D2, D4 and D5 are data for MINUTE and SECOND, so value should be 0 to 59
5. Actions of every set are the same. It is only different to occupied D and M because of starting D and starting M which are set by user.